

WINOGRADSKY REVIEW

Microbial ecology meets electrochemistry: electricity-driven and driving communities

Korneel Rabaey^{1,2}, Jorge Rodríguez¹, Linda L Blackall¹, Jurg Keller¹, Pamela Gross³, Damien Batstone¹, Willy Verstraete² and Kenneth H Nealson⁴

¹The Advanced Wastewater Management Centre, University of Queensland, Brisbane, Queensland, Australia; ²Laboratory of Microbial Ecology and Technology (LabMET), University of Ghent, Ghent, Belgium; ³School of Medicine, University of Southern California, Los Angeles, CA, USA and ⁴Department of Earth Sciences, University of Southern California, Los Angeles, CA, USA

Bio-electrochemical systems (BESs) have recently emerged as an exciting technology. In a BES, bacteria interact with electrodes using electrons, which are either removed or supplied through an electrical circuit. The most-described type of BES is microbial fuel cells (MFCs), in which useful power is generated from electron donors as, for example, present in wastewater. This form of charge transport, known as extracellular electron transfer, was previously extensively described with respect to metals such as iron and manganese. The importance of these interactions in global biogeochemical cycles is essentially undisputed. A wide variety of bacteria can participate in extracellular electron transfer, and this phenomenon is far more widespread than previously thought. The use of BESs in diverse research projects is helping elucidate the mechanism by which bacteria shuttle electrons externally. New forms of interactions between bacteria have been discovered demonstrating how multiple populations within microbial communities can co-operate to achieve energy generation. New environmental processes that were difficult to observe or study previously can now be simulated and improved via BESs. Whereas pure culture studies make up the majority of the studies performed thus far, even greater contributions of BESs are expected to occur in natural environments and with mixed microbial communities. Owing to their versatility, unmatched level of control and capacity to sustain novel processes, BESs might well serve as the foundation of a new environmental biotechnology. While highlighting some of the major breakthroughs and addressing only recently obtained data, this review points out that despite rapid progress, many questions remain unanswered.

The ISME Journal (2007) 1, 9–18; doi:10.1038/ismej.2007.4

Keywords: microbial fuel cell; extracellular electron transfer; bioremediation; wastewater treatment; nutrient removal

From extracellular electron transfer to bio-electrochemical systems

A bio-electrochemical system (BES) mimics bacterial interactions with insoluble electron donors and acceptors (Figure 1). In BES, bacteria need to establish an electrical link with this insoluble electron donor or acceptor. The most extensively described BES is the microbial fuel cell (MFC). In an MFC, bacteria oxidize an electron donor, with an anodic electrode as the electron acceptor. The electrons flow from the anode through an electrical circuit toward a high redox electron acceptor, such as oxygen, at the cathode. Cations make up the charge balance by diffusing from anode to cathode

through a charge-selective separator (Rabaey and Verstraete, 2005). In addition, bacteria can consume electrons at the cathode with the reduction of electrochemically positive electron acceptors such as nitrate, perchlorate or metals (Gregory *et al.*, 2004; Gregory and Lovley, 2005; Clauwaert *et al.*, 2007; Thrash *et al.*, 2007).

The underlying driver in all anodic and cathodic cases is extracellular electron transfer. Extracellular electron transfer is required whenever an electron acceptor or donor cannot enter the cell. Extracellular electron transfer has primarily been studied in microorganisms that transfer electrons to insoluble Fe(III) or Mn(IV) oxides or to humic substances that are too large to enter cells (Lovley *et al.*, 1987, 1996; Myers and Nealson, 1988). Whereas similar principles may apply to microbe–electrode interactions (Rabaey and Verstraete, 2005; Lovley, 2006), the mechanisms of extracellular electron transfer, and the overall impact on microbial ecology and physiology, are poorly understood.

Correspondence: Dr K Rabaey, The Advanced Wastewater Management Centre, Gehrmann Building (60), The University of Queensland, Brisbane, Queensland 4072, Australia.
E-mail: k.rabaey@uq.edu.au

Received 19 February 2007; accepted 21 February 2007

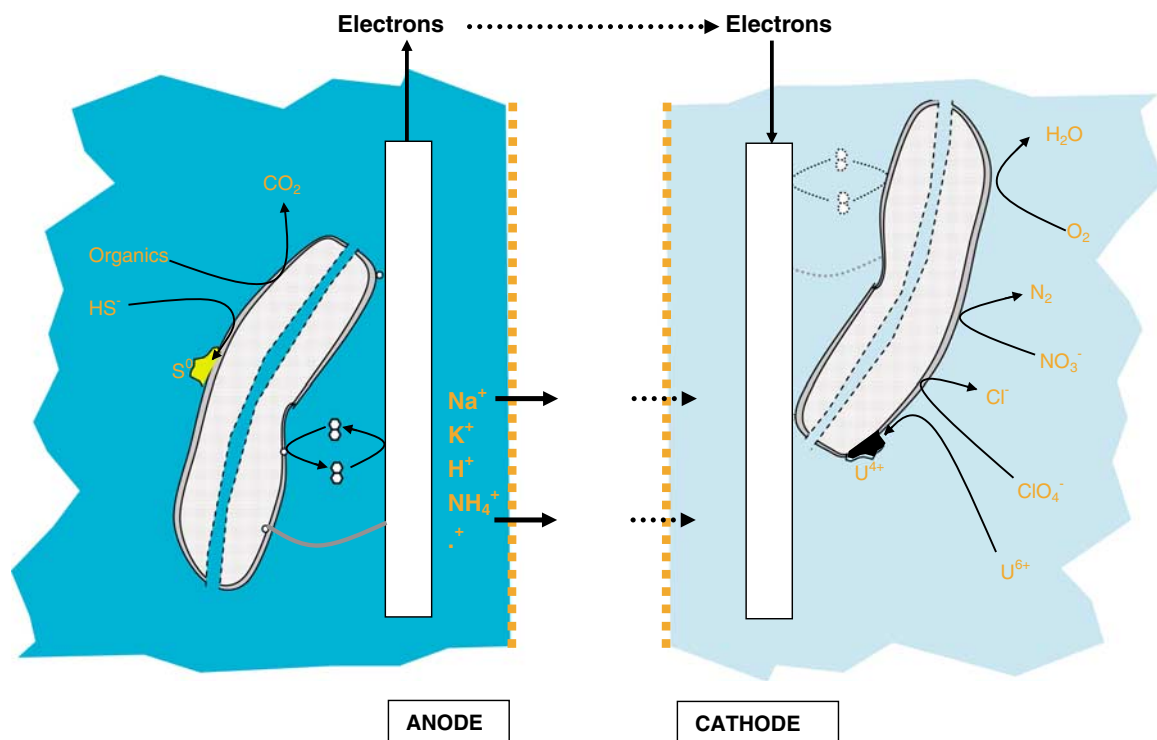


Figure 1 Schematic representation of possible reactions occurring at biologically catalyzed anodes and cathodes. At the anode, electrons are gained through the oxidation of organic electron donors (Rao *et al.*, 1976) or possibly also sulfide oxidation (Rabaey *et al.*, 2006). The electrons can be conveyed to the anode by either direct or indirect electron transfer. At the cathode, the mode through which electrons are conveyed to the bacteria has not been studied so far, the depicted pathways are therefore assumed. Oxygen (Bergel *et al.*, 2005), nitrate (Clauwaert *et al.*, 2007), hexavalent uranium (Gregory and Lovley, 2005) and perchlorate have been reduced at bio-cathodes so far. It must be noted that hydrogen is a possible electron shuttle at the cathode in case the potential of the cathode is poised at strongly negative values. When an anode and a cathode are combined, and at least one of the compartments is employing bacteria as catalysts, a BES is formed.

The bacterial cell yield depends on the potential difference between the electron donor and acceptor, which translates into the energy available for the bacteria (Heijnen, 1999). The potential difference between donor and acceptor is calculated with the Nernst equation as a dependent of the amount of oxidized and reduced compound present (Rabaey and Verstraete, 2005). In BES anodes, the potential of the electron acceptor is defined by the anodic potential, whereas in BES cathodes, the cathodic electrode determines the electron-donor potential. However, the bacteria cannot always fully exploit the actual potential of, e.g., the electron acceptor in BES anodes, as losses occur between the bacteria and the electrodes. These losses can be described as *activation losses* and *electrolyte-resistance losses* (Larminie and Dicks, 2000). The resistance of the electrolyte causes a distant dependent loss. Thus, the closer the interaction between bacteria and the electrode, the lower this loss. Activation losses are intrinsic to oxidation/reduction reactions and are less straightforward to describe (Logan *et al.*, 2006). They reflect the losses resulting from the imperfect catalysis of oxidation/reduction reaction. The activation loss at an electrode, or toward or away from an insoluble electron acceptor/donor, respectively,

can be described by the Butler–Volmer equation (Bard and Faulkner, 2001). The parameters of this equation can be determined through a linearization, after which the gain for bacteria can be calculated based on an electron flux. The result of such a measurement can be seen in Figure 2. The electrode/biofilm combination can cope with far larger current densities without showing substantial potential losses. This demonstrates that the electrode/biofilm combination has become a far better catalyst than the electrode alone. Clearly, bacteria improve (electrochemical) catalysis. However, these measurements do not disclose the method through which bacteria operate.

How do bacteria function in a BES?

Bacteria become, from an electrochemical point of view, better catalysts by facilitating electron transport between the electron donor and the electrode. Thus far, primarily anodic processes have been studied with respect to electron transfer mechanisms. Whereas the reductions of Fe(III) and Mn(IV) oxides and anodes appear highly similar, distinct differences indicate that not only the redox potential

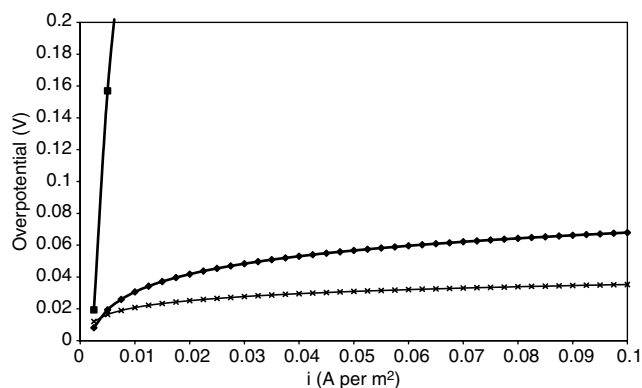


Figure 2 How bacteria make a difference... the exchange of electrons to and from electrodes requires a certain activation energy, which translates into a potential loss (V). The larger the current flowing between the medium and the electrode, the larger this potential loss. The addition of a catalyst lowers the activation energy, and therefore, also the potential losses. Without bacteria (■) or other catalysts, even at low current densities, the potential loss quickly becomes substantial at an anode, whereas in the presence of bacteria (×), the same electrode shows excellent electrochemical properties. The bacteria growing on the anode outperform a well catalyzed ferricyanide utilizing cathode (◆). The measurements and subsequent calculations were performed using a system according to Aelterman *et al.* (2006) and the Butler–Volmer equation (Larminie and Dicks, 2000).

determines the utilization rate and strategy. At present, bacteria are assumed to either transfer electrons through *immobilized* structures or *mobile* components.

Electron transfer through immobilized structures

Some microorganisms must establish a direct contact with insoluble electron acceptors in order to promote electron transfer (Bond and Lovley, 2003). This has been demonstrated extensively for *Geobacter* species, where electron transfer to Fe(III) oxides requires the presence of several outer-membrane *c*-type cytochromes (Leang *et al.*, 2005; Mehta *et al.*, 2005) and other outer-membrane proteins (Afkar *et al.*, 2005; Mehta *et al.*, 2005). For soluble electron acceptors, such as Fe(III) citrate, this is not the case. Without direct contact, *Geobacter* spp. cannot reduce Fe(III) oxides. More recently, it was noted that outer-membrane proteins are not always sufficient for the reduction of Fe(III) oxides. For *Geobacter sulfurreducens*, the reduction requires pili, also referred to as nanowires, which are specifically produced during growth on ferric oxide, but not observed during growth on soluble electron acceptors (Childers *et al.*, 2002; Reguera *et al.*, 2005). In addition to pili, *Geobacter metallireducens* also synthesizes flagella when grown with Fe(III) oxides as electron acceptor (Childers *et al.*, 2002). However, as the chemotaxis of this organism is toward Fe(II), and not Fe(III), it is as yet unclear whether synthesis of the flagella is relevant to establishing contact with an electrode, as electrodes

do not release reduced reaction products such as Fe(II).

Likewise, *Shewanella oneidensis* MR-1 produces pilus-like structural components (Gorby *et al.*, 2006). In this case, contrary to *Geobacter* species, the nanowires are arrayed in larger bundles, often reaching 50 nm in diameter, and extending many micrometers from the producing cell. Experiments with gold-labeled antibodies have shown that these highly conductive nanowires are decorated with surface proteins, including some of the major decaheme proteins generally involved in iron reduction (Gorby *et al.*, 2006). Bacterial cells containing deletion mutations in the *pilD* gene do not produce nanowires, and are incapable of electricity production or the reduction of Fe(III) oxide (Bretschger and Nealon, unpublished results). These cells are still capable of reducing the soluble (Fe(III)-NTA) to ferrous iron. Deletion mutations in the *mtrC/omcA* gene complex result in cells that produce nanowires that are easily visible, but which appear to be non-conductive based upon scanning tunneling microscopy. Gorby *et al.* (2006) noted that electrically conductive pilus-like appendages were produced by several bacteria besides *S. oneidensis* when grown with ferrihydrite as electron acceptor. *S. oneidensis* MR-1 also required several *c*-type cytochromes to create the conductive link between the bacteria and the insoluble electron acceptor.

The findings that both *Shewanella* and *Geobacter* species can employ similar strategies indicate that the combination of cytochromes and conductive nanowires is a general strategy for extracellular electron transfer toward Fe(III) oxides, in addition to the further-described shuttling mechanisms. The similarities and dissimilarities between nanowires produced by *Shewanella* and *Geobacter* spp., and other bacterial species in general, are still the subject of debate. As observed for metal reduction, both cytochromes and pili appear to be involved in current production by *Geobacter* and *Shewanella*. The relative importance of both factors can shift, however, depending on whether the bacteria actually form a biofilm or grow in monolayers.

Expression of the gene for the outer-membrane *c*-type cytochrome, OmcS, was much higher in fuel cells of *Geobacter* growing as monolayers on the anode compared with *Geobacter* grown in suspension on a soluble electron acceptor (Holmes *et al.*, 2006). Deleting the gene for OmcS inhibited power production, whereas current was restored when the gene was reintroduced. This result suggests that OmcS can be an electrical contact between the cell and the anode. *Geobacter* can also form thick (> 50 μm) biofilms on electrodes (Reguera *et al.*, 2006a). Cells at a distance to the anode had similar viability as compared to cells adjacent to the anode. Under these conditions, pili production is essential for optimum current production (Reguera *et al.*, 2006a). It remains to be determined whether the microbial nanowires must directly contact the anode

or whether cell-to-cell electron transfer through the biofilm is possible. The pili may also provide structural support in biofilm formation (Reguera *et al.*, 2006b).

Direct electron transport is possibly bidirectional, as *Geobacter* species have been shown to accept electrons from a cathode (Gregory *et al.*, 2004). Also, denitrifying biofilms have been developed on cathodes (Clauwaert *et al.*, 2007), but the mechanism of such bacterially driven transfer has not been elucidated.

Electron transfer through mobile components

Alternatively, bacteria can produce and use soluble components known as redox shuttles or redox mediators. The most extensively described examples in BESs are phenazines such as pyocyanin and phenazine-1-carboxamide, which are redox-active compounds produced by *Pseudomonas* species (Hernandez *et al.*, 2004; Rabaey *et al.*, 2005a). These compounds were essential for current generation by *Pseudomonas aeruginosa* KRP1, an isolate from an MFC. There are several studies on the role of humic acids as redox shuttles in ferric iron reduction (Lovley *et al.*, 1996, 2004), but so far none have focused on the role humics play in BES. Recently, Milliken and May (2007) used humics to obtain extracellular electron transfer by *Desulfitobacterium hafniense*. This indicates that in sediment-based BESs, where humics are often present, they could function as redox shuttles.

Shewanella putrefaciens is capable of using externally provided electron shuttles, such as the humic acid model compound anthraquinone-2,6-disulfonic acid (AQDS), but whether the organism is capable of obtaining shuttle-based electron transfer by synthesizing a shuttle is still a subject of debate (Newman and Kolter, 2000). Also *Geobacter* species have the capacity to utilize redox shuttles when these are provided externally. For example, when physically separated from their electron acceptor, *Geobacter metallireducens* was capable of reducing Fe(III) oxides when AQDS was added to the medium (Nevin and Lovley, 2000).

The number of possible electron shuttles is surprisingly large. In addition to organic heterocyclic and monocyclic compounds, sulfur species and hydrogen can be used as electron shuttles (Lovley, 2000; Straub and Schink, 2004; Niessen *et al.*, 2005; Rabaey *et al.*, 2006). To mimic the microbial shuttling, redox-active compounds such as neutral red can be added to the anode compartment of an MFC (Park and Zeikus, 2000). In one study, it was shown that *Escherichia coli* species transported neutral red into the periplasmic space, where a hydrogenase-mediated reduction occurred (McKinlay and Zeikus, 2004). Hydrogenases appear to be involved in linking the electrons passing through the inner membrane to further electron transfer, which is also corroborated by the fact that

the genes coding for these enzymes are upregulated during growth on insoluble electron acceptors (Holmes *et al.*, 2006).

The critical issue with mediated electron transfer is the diffusion of the shuttle out of the biofilm or the bacterial environment. As the energy investment to produce shuttles is considerable, this efflux can render the shuttling process thermodynamically inefficient (Childers *et al.*, 2002) or at least less favorable than direct transfer as used by *Geobacter* species (Madahevan *et al.*, 2006). Whereas, initially, shuttling was only found in systems where the bulk liquid was only irregularly replaced (Rabaey *et al.*, 2004; Bond and Lovley, 2005), bacteria capable of producing redox shuttles have also been found in continuous-flow MFC, where the bulk liquid is continuously replaced (Aelterman *et al.*, 2006). Redox shuttles appear to be present mainly in the biofilm, and not in the bulk liquid (Bond and Lovley, 2005), but the underlying mechanism for this selective presence has yet to be addressed. As the calculations in the Supplementary data indicate (see Supplementary Figures 1–4), electrostatic interactions may play a big role in redox shuttling. Based on the Nernst–Planck equation (MacGillivray, 1968), one can calculate that for phenazine-1-carboxamide – a well-described redox shuttle – the flux of its reduced form through a biofilm toward a modeled anode is substantially accelerated (in the calculated case) by the electrostatic attraction (Supplementary data S1), whereas the efflux of its oxidized form is determined by concentration gradients. This enhances the retention of shuttles in a biofilm by more than an order of magnitude in comparison to conventional diffusion models, which results in a substantial difference in current stability (Supplementary Figure S1) and redox potential evolution (Supplementary Figure S2), even without the inclusion of a shuttle production term in the used model. Nearly all the shuttles would theoretically accumulate close to the anode (Supplementary Figure S3), whereas the shuttle concentration at the top of the biofilm is almost negligible in comparison (Supplementary Figure S4). This could create a duality between bacteria at the bottom of the biofilm, which have direct access to electron acceptors but are limited in electron donor availability, and bacteria at the top of the biofilm, which have direct access to the electron donor but are limited in electron acceptor availability. Experimental validation is needed to confirm this effect *in situ*, and investigate its ecological implications.

Gram-positive electron shuttling

Perhaps unexpectedly, Gram-positive bacteria were found to play a role in MFC. Their presence appears to be an outcome of an ecological interaction rather than a direct involvement. Isolates of *Enterococcus* (Rabaey *et al.*, 2004, 2005a) and *Brevibacillus* (Pham

Box 1 Finding out: using bio-electrochemical systems (BESs) to study microbial dynamics and microbial ecology

BESs are increasingly used to study the microbial mechanisms of electron transfer. As BESs offer a plethora of options to monitor and/or control bacterial activity in different redox or flux conditions, the capacities are only beginning to be exploited. The basic strategies include the following:

- *Electrode potential control*: The electrode potential is controlled at a fixed level, at which the current density can be monitored as an indicator for bacterial activity. This approach targets certain metabolic patterns. The electrode potential can be varied to shift from oxidation to fermentation of a substrate. For example, a glucose-fed microbial fuel cell (MFC) had an order of magnitude more acetate in the effluent when the external resistance was 100 vs 20 Ω , with resulting anodic potentials of about -250 and 0 mV vs standard hydrogen electrode (SHE), respectively (Stefano Freguia, available online). This type of control has extensively been used for MFC research (Bond and Lovley, 2003; Rabaey *et al.*, 2006). The colonization rate and growth yield of the bacteria changed as a function of the applied potential (Finkelstein *et al.*, 2006), thus providing a system to examine how small changes in potential impact bacterial communities.
- *Bacterial activity control*: A fixed current is demanded of, or provided to, a biological system, which can stimulate or decelerate a process. Depending on the capability of the system to deliver this current, the potential of the electrode will evolve (Larminie and Dicks, 2000). When a certain current is *demanded* from bacteria, and they can indeed deliver the electrons, then the potential will remain within the normal redox boundaries for the bacteria. A decrease in anode potential indicates enrichment, as the bacteria generate more reduced conditions (Rabaey *et al.*, 2004). This would enable a higher current demand. An increase of the potential beyond the normal biological boundaries indicates inability of the bacteria to provide electrons at a sufficient rate to avoid electrochemical oxidation of solutes. Electrode surface increase and catalysis (Park and Zeikus, 2003) or mediator addition (Roller *et al.*, 1984) would be the necessary modifications to improve this situation. The reverse process can also be envisaged at a cathode. If bacteria at a cathode are unable to take up the electrons delivered, electrochemical processes such as hydrogen generation can occur. This production has already been proposed as an abiotic hydrogen generation strategy (Liu *et al.*, 2005; Rozendal *et al.*, 2006).
- *Bacterial potential control*: When working with a fixed external resistance, the evolution of the electrode's potential as a function of bacterial kinetics can be monitored. In this case, bacteria will drive the system toward an attainable activity that allows energy capture for growth and maintenance (Freguia *et al.*, 2007). Communities adapt quickly to large fluctuations in the potential of the electron acceptor, as decreases of up to 500 mV of the anode potential in an MFC have been observed within just a few hours (Rabaey *et al.*, 2004, 2005b). Also for cathodic processes, variable potentials can be observed, for example, as a function of nitrate loading rate and applied external resistor (Clauwaert *et al.*, 2007).

An important factor in BES research will be 'electrochemical quality' of the reactor. Indeed, factors such as internal resistance, electrode surface and mixing will determine the accuracy of measurements, the attainable substrate fluxes and the accumulation of intermediates and end products.

et al., unpublished results) spp. produced very low current when grown in pure culture with acetate as the electron donor. The latter organism was one of the dominant species in a microbial consortium enriched in an MFC fed with acetate (Aelterman *et al.*, 2006). When this pure culture was combined with *Pseudomonas* sp. or supernatant obtained from an MFC containing *Pseudomonas* sp., the current generation increased. Recently, Milliken and May (2007) described a similar interaction with *Desulfitobacterium hafniense*. In this case, humic acids were used as the electron shuttle. However, the current generation could not be sustained in most cases, indicating that the presence of humics is insufficient to drive the electron shuttling by *Desulfitobacterium* species. Further research should be directed at investigating the true role of Gram positives in BESs and in electron acceptor-limited sedimentary systems (Box 1).

BES and microbial ecology in the natural environment

In MFCs, biofilms performing extracellular electron transfer are almost always present and can reach considerable thickness (Reguera *et al.*, 2006a). The bacteria in these biofilms typically develop a plurality of electron transfer strategies (Rabaey

et al., 2004). Electrochemically competent complex and diverse microbial communities develop in reactor type MFCs when operated over a long time period. Figure 3 (Aelterman *et al.*, 2006) demonstrates how a microbial community can overcome both diffusion limitations and activity limitations over time. Diffusion limitations, referred to as concentration polarization in BESs, lead to a decrease in current observed during the recording of a polarization curve. The long-term disappearance of this effect implies that the bacterial biofilm either solved the diffusion limitation on the influx of substrate, or solved the limitations in discharging electrons to the electrode. At the point of maximal power (Figure 3), the microbial community was dominated by a Gram-positive bacterium unable to generate current when grown alone (Aelterman *et al.*, 2006; Pham *et al.*, unpublished results). This demonstrates that microbial interactions can drive the community succession toward an electrochemically competent BES biofilm. The underlying mechanisms for this process, and how diffusion limitations for electron donors and acceptors are solved by bacteria, are as yet poorly understood.

For sedimentary systems, the role and function of nanowires and redox shuttles are also still unresolved. Sediment MFCs can be applied in more natural conditions than reactor-based MFCs, do develop biofilms, but generally show lower output

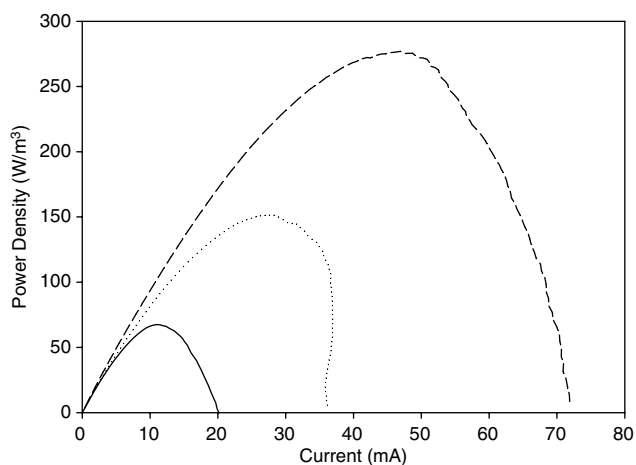


Figure 3 Polarization curves for a stacked MFC system, after Aelterman *et al.* (2006). In a polarization curve, the relationship between power generation by the MFC and current generation, which directly links to extracellular electron transfer, is examined. There is an optimal current – power that is reflected by the maximum in the curve (Logan *et al.*, 2006). In the period after the start-up (full line), when the bacterial density is still low, the maximum power is limited. At time 2 (dotted line), the attainable power was higher, which indicates a maturation of the system, but adverse effects exist at higher currents caused by concentration polarization (seen by the non-parabolic part of the polarization curve at time 1). At time 3 (dashed line), even though the attainable power and current are substantially higher, this concentration polarization was no longer noted. This demonstrates that bacteria can create electrochemically competent biofilms over time, capable of solving diffusional and electrochemical limitations. Further research on how communities achieve this is certainly needed.

than their reactor counterparts (Ryckelynck *et al.*, 2005). This may be caused by limitations on the substrate influx and the electron acceptor availability, as well as diffusion-based limitations (Ryckelynck *et al.*, 2005).

Geobacter species are found in abundance in some sedimentary systems, in particular those that are continuously anaerobic and driven by acetate as a carbon source. This, may stem from their ability to gain an energetic advantage through direct electron transfer vs shuttle-assisted transfer (Madahevan *et al.*, 2006). However, as indicated before, niches where large potential gradients exist, owing to diffusion limitations, may accommodate shuttle-using organisms that take advantage of the electrostatic attraction the electron acceptor exerts on the shuttle. From an ecological point of view, the most interesting aspect of redox shuttles is the absence of host specificity. Sediments and soils generally contain numerous compounds, including different humic acids that can serve as electron shuttles. Any bacterium capable of reducing the shuttle could potentially exploit the system (Rabaey *et al.*, 2005a). This could imply that the opportunities for non-adapted species to survive in sedimentary systems are higher than predicted based on their own metabolic potential. As some of the assumed redox shuttles have midpoint potentials well above

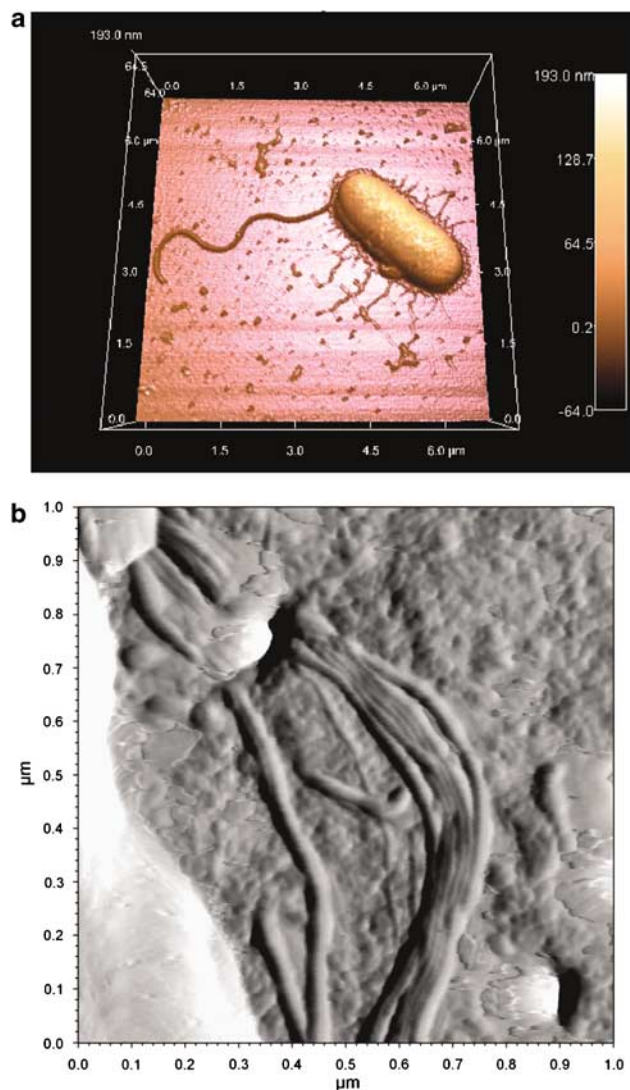


Figure 4 Images of *S. oneidensis* MR-1 grown in electron acceptor limited conditions. (a) Three-dimensional rendering of *S. oneidensis* MR-1 washed in suspension with water, then transferred to mica surface. A pattern of dried proteins and/or polysaccharides surrounds the bacteria on the substrate, and possible pili are seen extending from this pattern. Section analysis of the perpendicular structures extending from the edge of the bacteria reveals a height of 1.0–1.5 nm, and a flagellar height of 8.4 nm. (b) Atomic force microscope image of the amplitude data of a 1 µm scan of the edge of a community of *S. oneidensis* MR-1 growing on a polycarbonate filter membrane. Distinct individual filaments are seen bundling together and then diving into a pore in the membrane. These bundles are highly conductive. The bundle width is 87 nm at its narrowest point, the bundle height is 5.5 nm, and the individual filament height is 2.5–3.5 nm.

–150 mV vs standard hydrogen electrode (SHE), the presence of shuttles allows for a substantial metabolic gain.

In batch experiments for the reduction of Fe(III) oxides, certain bacteria require the production of nanowires in order to reduce the Fe(III) oxides. The nanowires in *Shewanella* are produced in abundance under conditions of severe electron acceptor

limitation (Gorby *et al.*, 2006; Figure 4). One example of a niche in which nanowires might play a role is that of sediments rich in iron-rich clays. In such clays, substantial reduction of interlayer iron is observed (Kostka *et al.*, 1996, 1999). This process could be carried out via electron shuttles, by the use of some iron-binding compounds like siderophores to transport the iron out of the clays, or perhaps by nanowires.

From extracellular electron transfer to environmental biotechnology

The findings through MFC/BES-based research have demonstrated that the capacity for extracellular electron transfer is widespread. Several strategies for extracellular electron transfer have been more clearly outlined, some of which are activated through interactions between bacteria. Insoluble electron acceptor-oriented foodwebs, starting from glucose (Rabaey *et al.*, 2003) and starch (Niessen *et al.*, 2004) to complex compounds such as nitrophenol and wastewater, can be constructed. The processes occurring can be categorized as oxidative or reductive.

Oxidative processes

Energy generation has been the prime objective of MFC/BES research thus far. MFCs have mainly been applied to soluble waste streams with low to medium loading, targeting recoveries of at least 1 kWh of useable electricity per kilogram of organic matter removed, and generation of up to 1 kW/m³ reactor volume. The sustained and reproducible exploitation of this energy will require better understanding and careful management of the microbial communities in the BES in terms of biomass density per unit volume and specific activity of the biomass (Pham *et al.*, 2006). The ability to reach usable electricity targets from wastewater will make MFC technology comparable to the standard procedure of anaerobic digestion to methane in terms of cost and environmental soundness. However, for maximal sustainability, BES should be considered complementary to, rather than competitive with, anaerobic digestion. There are several advantages of MFCs, which make the technology attractive:

- An oxidative process generates an effluent with mostly oxidized residual compounds rather than short-chain fatty acids or reduced sulfur compounds such as hydrogen sulfide (Rabaey *et al.*, 2006).
- Low-strength wastewaters can be effectively treated, also at ambient temperatures (Rabaey *et al.*, 2005b).
- Integrated nitrogen removal by cathode-driven denitrification has also been demonstrated (Clauwaert *et al.*, 2007).
- Expensive cogeneration facilities are not required, which make application at smaller scales more

feasible (<500 kW). In addition, it is possible to utilize streams with sulfur present; these would normally require a caustic scrubber.

It remains to be seen whether BESs will rise to the challenge of the wastewater complexity. Microbial communities capable of degrading complex compounds (aside from starch, Niessen *et al.*, 2004) with the concomitant generation of electricity have not yet been described for reactor-based BES. Sediment-based MFC have been operated over longer time periods, but the nature of the organics converted in those cases was not determined. Reactor-type MFCs fed with wastewater mainly convert *rapidly biodegradable* organic matter. The more recalcitrant material generally passes more or less unaltered through the system. This can be because of the short residence times (Rabaey *et al.*, 2005b) and the slower conversion of compounds such as complex aromatics under anaerobic conditions (Madigan *et al.*, 2000). It can also be assumed that sediment MFCs also target mainly the rapidly biodegradable fraction of the organic matter entering the sediment.

Particulate matter will also tend to decrease contact of the electron donor with the anode. Hence, hydrolysis and fermentation may occur in zones that are not able to rapidly deliver the electron to the acceptor site, which would enable the establishment of a microbial community that does not interact with insoluble electron acceptors. Further research is required to define how thick and dense a biofilm can become before the organisms in the upper layer 'disconnect' from the insoluble electron acceptor. Comparing activated sludge flocs with BES biofilm communities will provide highly interesting information on how both communities work and which are the ecological differences between biofilms and flocs when both tackle the same wastewater. Based on the specificity of microbial biochemistry, some niches in the environmental domain might also become of interest such as the proposed use of BESs, to enhance oxidation rates in constructed wetlands (De Schamphelaire *et al.*, unpublished results) and the application of these systems to bring about specific oxidative removal of sulfur compounds (Rabaey *et al.*, 2006).

Reductive processes

Whereas oxidation processes have been extensively studied in MFC, reduction processes have barely been addressed. There may well be tremendous potential to develop novel biotechnological applications using cathodic reduction. Some examples are presented here, and additional examples have recently been reviewed (He and Angenent, 2006).

Denitrification. The main focus of BES treating wastewater has been on the reuse of water and the conversion of organic matter into electricity. The use of BES for nutrient management opens new per-

spectives for an integrated and sustainable wastewater treatment process. At present, nitrogen is removed from wastewater by nitrification and denitrification. Enormous recycling of wastewater is required to satisfy the conflicting electron donor and acceptor requirements of nitrifiers and denitrifiers. This is highly energy demanding, and the process often requires the addition of electron donors. Gregory *et al.* (2004) enriched a graphite cathodic electrode that can deliver electrons directly to microorganisms for nitrate-to-nitrite reduction without H₂ as an intermediate. Recently, complete denitrification with a so-called biocathode (He and Angenent, 2006) was described at a rate of 0.146 kg NO₃⁻-Nm⁻³ cathodic liquid volume d⁻¹ (Clauwaert *et al.*, 2007). Neither a power supply nor a potentiostat were needed as a biological acetate-oxidizing anode delivered electrons to the cathodic electrode. An external resistance harvested electricity up to 0.017 kWh mol⁻¹ electrons whereas H₂ producing cathodes consume up to 1 kWh mol⁻¹ electrons (Sakakibara and Kuroda, 1993). Denitrification only occurred when the redox potential of the cathodic electrode was below 0 V vs SHE. However, the mechanism by which the bacteria transfer electrons from an inert electrode into their electron transport chain to produce ATP remains unknown.

BESs for metal contaminant removal. The biological removal of metals can occur by oxidative and a reductive processes. One reported process used an electrode as electron donor for the microbial reduction of uranium (Gregory and Lovley, 2005). This caused the conversion of soluble U(VI) to the rather insoluble U(IV), which precipitated onto the electrodes. A major contribution of BES-based processes could be in the removal of a wide variety of heavy metals, thus addressing pollution by aqueous streams containing these contaminants.

With respect to freshwater bodies such as rivers, BESs might be of great value in preventing shock remobilization of sediments. Owing to increasing water quality, the oxygen availability in sediments is increasing, and in a cascade effect, this could cause remobilization of metals associated with, for example, sulfides (Salomons *et al.*, 1987). Controlling the potential of the sediment may aid in a more gradual oxidation of sulfide species and, therefore, slower metal release. Further research will be needed to demonstrate the mode of implementation and the feasibility of such strategies.

Perchlorate removal. Recently, also the reduction of perchlorate in the cathode compartment of a BES was described. Thrash *et al.* (2007) were able to isolate one of the organisms responsible for the perchlorate reduction, which was designated strain VDY. When the cathode potential was poised at -500 mV vs Ag/AgCl reference, the organism was capable of reducing perchlorate without the addi-

tion of a redox mediator. Hydrogen, formed electrocatalytically at the cathode, likely served as the redox shuttle to convey the electrons toward strain VDY.

Conclusions

The knowledge of how bacteria interact with insoluble electron donors and acceptors is rapidly increasing. There are still a number of issues unresolved, such as the role of pili/nanowires and electron shuttles in the *natural* environment. However, complementary findings by several research groups indicate that the mechanisms for extracellular electron transfer are widespread and likely conserved. In the near future, BESs will become an important tool in filling knowledge gaps in extracellular electron transfer by microorganisms. BESs allow a unique control mechanism on activity and redox potential in the bacterial environment. In the longer term, the bio-electrochemical approach will strongly facilitate advanced interpretation of biogeochemical cycles, and the influence of changing environmental and anthropogenic factors on the bacteria driving them.

BESs also offer a number of exciting prospects for novel biotechnological applications. The recent studies that demonstrate how nitrate, perchlorate, sulfur and other compounds can be adequately removed using BESs are the first indication of the feasibility of processes driven by extracellular electron transfer. However, there are still many hurdles ahead before BESs can compete with existing technologies and before we can fully exploit their capacity to drive sustainable processes.

Acknowledgements

We thank Derek Lovley for his valuable comments and inputs to this work. Also the useful remarks provided by Peter Clauwaert are greatly appreciated. Korneel Rabaey is supported through the Postdoctoral Fellow Scheme at the University of Queensland and through the Australian Research Council Discovery program. The Ncalson laboratory acknowledges the support from the AFOSR MURI program. LabMET acknowledges the support of FWO and IWT Vlaanderen.

References

- Aelterman P, Rabaey K, The Pham H, Boon N, Verstraete W. (2006). Continuous electricity generation at high voltages and currents using stacked microbial fuel cells. *Environ Sci Technol* **40**: 3388–3394.
- Afkar E, Reguera G, Schiffer M, Lovley DR. (2005). A novel Geobacteraceae-specific outer membrane protein J (OmpJ) is essential for electron transport to Fe (III) and Mn (IV) oxides in *Geobacter sulfurreducens*. *BMC Microbiology* **5**: Art. No. 41.

- Bard AJ, Faulkner LR. (2001). *Electrochemical Methods: Fundamentals and Applications*, 2nd edn. John Wiley & Sons: New York.
- Bergel A, Feron D, Mollica A. (2005). Catalysis of oxygen reduction in PEM fuel cell by seawater biofilm. *Electrochem Comm* **7**: 900–904.
- Bond DR, Lovley DR. (2003). Electricity production by *Geobacter sulfurreducens* attached to electrodes. *Appl Environ Microbiol* **69**: 1548–1555.
- Bond DR, Lovley DR. (2005). Evidence for involvement of an electron shuttle in electricity generation by geothrix fermentans. *Appl Environ Microbiol* **71**: 2186–2189.
- Childers SE, Ciuffo S, Lovley DR. (2002). *Geobacter* metallireducens accesses insoluble Fe(III) oxide by chemotaxis. *Nature* **416**: 767–769.
- Clauwaert P, Rabaey K, Aelterman P, De Schampheleire L, The Pham H, Boeckx P *et al.* (2007). Biological denitrification driven by microbial fuel cells. *Environ Sci Technol* (available online).
- Finkelstein DA, Tender LM, Zeikus JG. (2006). Effect of electrode potential on electrode-reducing microbiota. *Environ Sci Technol* **40**: 6990–6995.
- Freguia S, Yuan S, Rabaey K, Keller J. (2007). Electron and carbon balances in microbial fuel cells reveal temporary bacterial storage behaviour during electricity generation. *Environ Sci Technol* (available online).
- Gorby YA, Yanina S, McLean JS, Rosso KM, Moyles D, Dohnalkova A *et al.* (2006). Electrically conductive bacterial nanowires produced by *Shewanella oneidensis* strain MR-1 and other microorganisms. *Proc Natl Acad Sci USA* **103**: 11358–11363.
- Gregory KB, Bond DR, Lovley DR. (2004). Graphite electrodes as electron donors for anaerobic respiration. *Environ Microbiol* **6**: 596–604.
- Gregory KB, Lovley DR. (2005). Remediation and recovery of uranium from contaminated subsurface environments with electrodes. *Environ Sci Technol* **39**: 8943–8947.
- He Z, Angenent LT. (2006). Application of bacterial biocathodes in microbial fuel cells. *Electroanalysis* **18**: 2009–2015.
- Heijnen JJ. (1999). Bioenergetics of microbial growth. In: Flickinger MC, Drew SW (eds). *Bioprocess Technology: Fermentation, Biocatalysis and Bioseparation*. John Wiley & Sons Inc.: New York, pp 267–291.
- Hernandez ME, Kappler A, Newman DK. (2004). Phenazines and other redox-active antibiotics promote microbial mineral reduction. *Appl Environ Microbiol* **70**: 921–928.
- Holmes DE, Chaudhuri SK, Nevin KP, Mehta T, Methe BA, Liu A *et al.* (2006). Microarray and genetic analysis of electron transfer to electrodes in *Geobacter sulfurreducens*. *Environ Microbiol* **8**: 1805–1815.
- Kostka JE, Stucki JW, Nealson KH, Wu J. (1996). Reduction of structural Fe(III) in smectite by a pure culture of *Shewanella putrefaciens* strain MR-1. *Clays Clay Min* **44**: 522–529.
- Kostka JE, Wu J, Nealson KH, Stucki JW. (1999). The impact of structural Fe(III) reduction by bacteria on the surface chemistry of smectite clay minerals. *Geochim Geochim Acta* **63**: 3705–3713.
- Larminie J, Dicks A. (2000). *Fuel Cell Systems Explained*. John Wiley & Sons: Chichester, 308pp.
- Leang C, Adams LA, Chin KJ, Nevin KP, Methe BA, Webster J *et al.* (2005). Adaptation to disruption of the electron transfer pathway for Fe(III) reduction in *Geobacter sulfurreducens*. *J Bacteriol* **187**: 5918–5926.
- Liu H, Grot S, Logan BE. (2005). Electrochemically assisted microbial production of hydrogen from acetate. *Environ Sci Technol* **39**: 4317–4320.
- Logan B, Aelterman P, Hamelers B, Rozendal R, Schroder U, Keller J *et al.* (2006). Microbial fuel cells: methodology and technology. *Environ Sci Technol* **40**: 5181–5192.
- Lovley DR. (2000). Fe(III) and Mn(IV)-reducing prokaryotes. In: Dworkin M, Falkow S, Rosenberg E, Schleifer K, Stackebrandt E (eds). *The Prokaryotes*. Springer-Verlag: New York.
- Lovley DR. (2006). Bug juice: harvesting electricity with microorganisms. *Nat Rev Microbiol* **4**: 497–508.
- Lovley DR, Coates JD, BluntHarris EL, Phillips EJP, Woodward JC. (1996). Humic substances as electron acceptors for microbial respiration. *Nature* **382**: 445–448.
- Lovley DR, Holmes DE, Nevin KP. (2004). Dissimilatory Fe(III) and Mn(IV) reduction. *Adv Microb Physiol* **49**: 219–286.
- Lovley DR, Stolz JF, Nord GL, Phillips EJP. (1987). Anaerobic production of magnetite by a dissimilatory iron-reducing microorganism. *Nature* **330**: 252–254.
- MacGillivray AD. (1968). Nernst-Planck equations and the electroneutrality and Donnan equilibrium assumptions. *J Chem Phys* **48**: 2903–2907.
- Madahevan R, Bond DR, Butler JE, Esteve-Nunez A, Coppi M, Palsson BO *et al.* (2006). Characterization of metabolism in the Fe(III)-reducing organism *Geobacter sulfurreducens* by constraint-based modeling. *Appl Environ Microbiol* **72**: 1558–1568.
- Madigan MT, Martinko J, Parker J. (2000). *Brock Biology of Microorganisms*. Prentice-Hall: Englewood Cliffs, NJ, 991pp.
- McKinlay JB, Zeikus JG. (2004). Extracellular iron reduction is mediated in part by neutral red and hydrogenase in *Escherichia coli*. *Appl Environ Microbiol* **70**: 3467–3474.
- Mehta T, Coppi MV, Childers SE, Lovley DR. (2005). Outer membrane *c*-type cytochromes required for Fe(III) and Mn(IV) oxide reduction in *Geobacter sulfurreducens*. *Appl Environ Microbiol* **71**: 8634–8641.
- Milliken CE, May HD. (2007). Sustained generation of electricity by the spore-forming, Gram-positive, *Desulfitobacterium hafniense* strain DCB2. *Appl Microbiol Biotechnol* **73**: 1180–1189.
- Myers CR, Nealson KH. (1988). Bacterial manganese reduction and growth with manganese oxide as the sole electron-acceptor. *Science* **240**: 1319–1321.
- Nevin KP, Lovley DR. (2000). Lack of production of electron-shuttling compounds or solubilization of Fe(III) during reduction of insoluble Fe(III) oxide by *Geobacter metallireducens*. *Appl Environ Microbiol* **66**: 2248–2251.
- Newman DK, Kolter R. (2000). A role for excreted quinones in extracellular electron transfer. *Nature* **405**: 94–97.
- Niessen J, Schroder U, Harnisch F, Scholz F. (2005). Gaining electricity from in situ oxidation of hydrogen produced by fermentative cellulose degradation. *Letts Appl Microbiol* **41**: 286–290.
- Niessen J, Schroder U, Scholz F. (2004). Exploiting complex carbohydrates for microbial electricity generation – a bacterial fuel cell operating on starch. *Electrochem Comm* **6**: 955–958.
- Park DH, Zeikus JG. (2000). Electricity generation in microbial fuel cells using neutral red as an electro-nophore. *Appl Environ Microbiol* **66**: 1292–1297.

- Park DH, Zeikus JG. (2003). Improved fuel cell and electrode designs for producing electricity from microbial degradation. *Biotechnol Bioeng* **81**: 348–355.
- Pham TH, Rabaey K, Aelterman P, Clauwaert P, De Schampelaire L, Boon N *et al*. (2006). Microbial fuel cells in relation to conventional anaerobic digestion technology. *Eng Life Sci* **6**: 285–292.
- Rabaey K, Boon N, Höfte M, Verstraete W. (2005a). Microbial phenazine production enhances electron transfer in biofuel cells. *Environ Sci Technol* **39**: 3401–3408.
- Rabaey K, Boon N, Siciliano SD, Verhaege M, Verstraete W. (2004). Biofuel cells select for microbial consortia that self-mediate electron transfer. *Appl Environ Microbiol* **70**: 5373–5382.
- Rabaey K, Clauwaert P, Aelterman P, Verstraete W. (2005b). Tubular microbial fuel cells for efficient electricity generation. *Environ Sci Technol* **39**: 8077–8082.
- Rabaey K, Lissens G, Siciliano SD, Verstraete W. (2003). A microbial fuel cell capable of converting glucose to electricity at high rate and efficiency. *Biotechnol Lett* **25**: 1531–1535.
- Rabaey K, Van de Sompel K, Maignien L, Boon N, Aelterman P, Clauwaert P *et al*. (2006). Microbial fuel cells for sulfide removal. *Environ Sci Technol* **40**: 5218–5224.
- Rabaey K, Verstraete W. (2005). Microbial fuel cells: novel biotechnology for energy generation. *Trends Biotechnol* **23**: 291–298.
- Rao JR, Richter GJ, Vonsturm F, Weidlich E. (1976). Performance of glucose electrodes and characteristics of different biofuel cell constructions. *Bioelectrochem Bioenerg* **3**: 139–150.
- Reguera G, McCarthy KD, Mehta T, Nicoll JS, Tuominen MT, Lovley DR. (2005). Extracellular electron transfer via microbial nanowires. *Nature* **435**: 1098–1101.
- Reguera G, Nevin KP, Nicoll JS, Covalla SF, Woodard TL, Lovley DR. (2006a). Biofilm and nanowire production leads to increased current in *Geobacter sulfurreducens* fuel cells. *Appl Environ Microbiol* **72**: 7345–7348.
- Reguera G, Pollina RB, Nicoll JS, Lovley DR. (2006b). Possible non-conductive role of *Geobacter sulfurreducens* pili nanowires in biofilm formation. *J Bacteriol* **189**: 2125–2127.
- Roller SD, Bennetto HP, Delaney GM, Mason JR, Stirling JL, Thurston CF. (1984). Electron-transfer coupling in microbial fuel-cells. 1. Comparison of redox-mediator reduction rates and respiratory rates of bacteria. *J Chem Technol Biotechnol B-Biotechnol* **34**: 3–12.
- Rozendal RA, Hamelers HVM, Euverink GJW, Metz SJ, Buisman CJN. (2006). Principle and perspectives of hydrogen production through biocatalyzed electrolysis. *Int J Hydrogen Energy* **31**: 1632–1640.
- Ryckelynck N, Stecher HA, Reimers CE. (2005). Understanding the anodic mechanism of a seafloor fuel cell: Interactions between geochemistry and microbial activity. *Biogeochemistry* **76**: 113–139.
- Sakakibara Y, Kuroda M. (1993). Electric prompting and control of denitrification. *Biotechnol Bioeng* **42**: 535–537.
- Salomons W, Rooij NM, Kerdijk H, Bril J. (1987). Sediments as a source for contaminants? *Hydrobiologia* **149**: 13–30.
- Straub KL, Schink B. (2004). Ferrihydrite-dependent growth of *Sulfurospirillum deleyianum* through electron transfer via sulfur cycling. *Appl Environ Microbiol* **70**: 5744–5749.
- Thrash JC, VanTrump JI, Weber KA, Miller E, Achenbach LA, Coates JD. (2007). Electrochemical stimulation of microbial perchlorate reduction. *Environ Sci Technol* **41**: 1740–1746.

Supplementary Information accompanies the paper on The ISME Journal website (<http://www.nature.com/ismej>)